

SURANAREE UNIVERSITY OF TECHNOLOGY



*INTERNATIONAL STUDENT
HANDBOOK*

ABOUT

Suranaree University of Technology (SUT) was established in 1990, as the first public autonomous university in Thailand under the supervision of the Royal Thai Government.

With the 30th years anniversary, It prides itself in promoting administrative effectiveness and efficiency in its operations. SUT is a scholarly community consisting of the learned and the learners, as well as all kinds of knowledge in sciences, and technology, beneficial to both individuals and society

SUT, specializing in science and technology, is determined to produce graduates with quality, knowledge, and integrity leading to wisdom; to create impactful research outputs; to provide academic services to the public through its engagement mission: to adapt, transfer, and develop technology for the sustainable progress of society; and to preserve and enrich the art and culture by adhering to the principles of academic freedom and good governance in the administration

LOCATION

111 University Avenue
Suranaree Sub-District
Muang Nakhon Ratchasima District
Nakhon Ratchasima
30000 Thailand

CONTACT

Tel. +66-4422-3000
Fax. +66-4422-4070
<http://www.sut.ac.th/2012/en/>
<https://www.facebook.com/sutnews/>



CENTER FOR INTERNATIONAL AFFAIRS



<https://www.facebook.com/sutcia>

<http://cia.sut.ac.th/>



INTERNATIONAL STUDENT SERVICES


ORIENTATION

VISA

**DORMITORY
BOOKING**

HEALTH INSURANCE

TRANSPORTATION

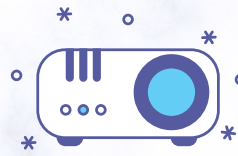
 **+6644-224145
CONSULTANT**

Emergency only, please call 085-7753532

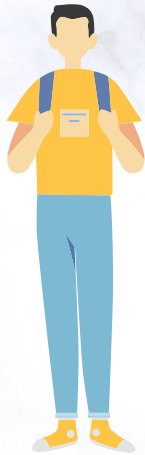
*MONDAY-FRIDAY | 08.30 a.m. - 4.30 p.m.
Ground Floor, Academic Building 2*



GUIDELINE FOR NEW STUDENT



Orientation



Life @SUT

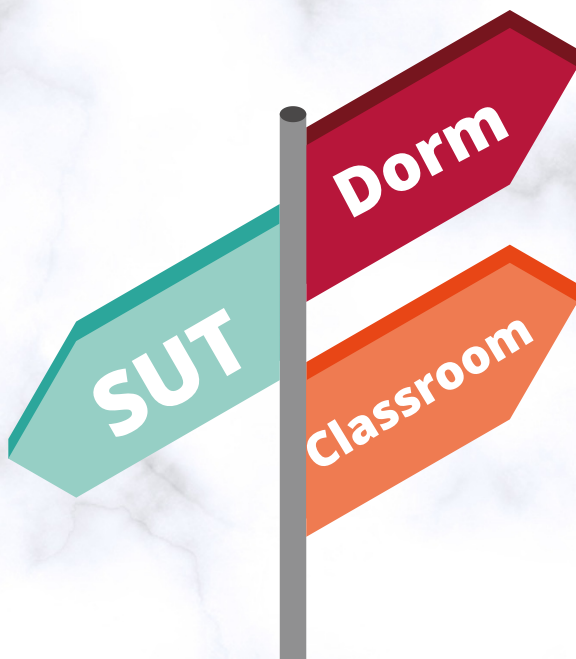
Visa



Health Insurance



International Student Activities





ORIENTATION

WWW.REG.SUT.AC.TH

Registration

***Courses
Enrollment***

Timetable

Certificates

Graduation Check

Grade Report

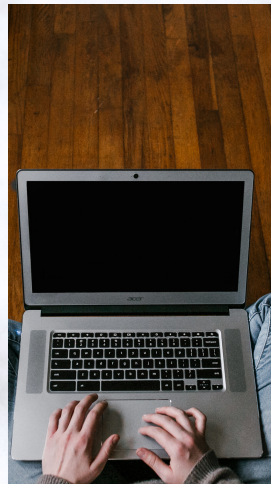
REGISTRATION & BRIEF ORIENTATION:

CIA staff will assist you with registration.

Please see details in [SUT New Student Registration Guideline](#)

You will be informed about the date and time of registration.

A brief introduction/orientation and a campus tour will also be arranged for new students.



DORMITORY FOR STUDENT

UNDERGRADUATE STUDENT | SURANIVET DORMITORY

SUT has on campus dormitories for undergraduate student called Suranivet Dormitory with 1-18 building (S1-S18). The fresh man year student must stay at S. Room rate is charged per term with various types of room, for international student CIA will reserve a room for student before student arrive SUT. The maximum room rate is 6,500 Thai Baht/semester with 7,000 Thai Baht for a damage deposit.

GRADUATE STUDENT | SURASAMMANAKHAN HOTEL

Surasammanakhan hotel main building (Sura 1):

The regular rate for double occupancy at Sura 1 is 800 Thai Baht/day.

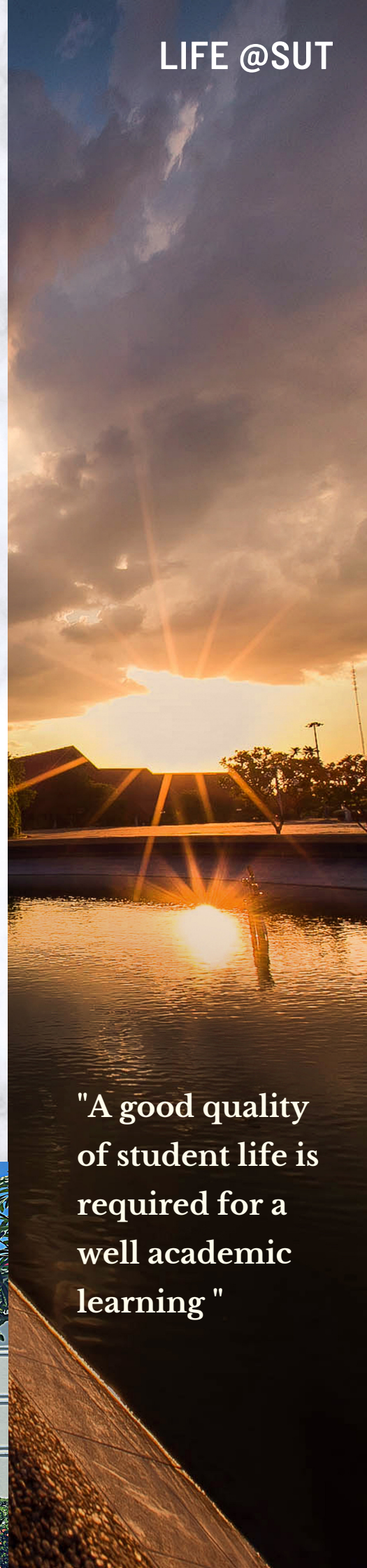
Sura 2 room is reserved to be a dormitory for graduate student. A room rate is 4,300 Thai Baht/month excluded electricity bill and water supply bill. As first signing rental contract a damage deposit of 5,000 Thai Baht is required.

Only two students will be allowed to share a room at Sura 1 and Sura 2.

The rooms at Sura 2 is limited as use first come first serve basis.

OFF CAMPUS DORMITORY |

There are various apartments, dorms or houses for rent off campus. It is recommended that students who wish to stay off campus and have their own transportation.



"A good quality of student life is required for a well academic learning "

FOOD ON/OFF CAMPUS

DO YOU LIKE THAI FOOD?

-CANTEEN ON CAMPUS-



-FOOD OFF CAMPUS-

CENTRAL CANTEEN

It located near SUT transportation station, serving breakfast and lunch daily. Price per dish is around 25-40 Thai Baht, mostly closed during term break.

STUDY COMPLEX CANTEEN 1-2

It located near next to the study complex 1-2 with the 2 canteen building you will find various of Thai food including Halal food, serving breakfast and lunch daily. Price per dish is around 25-50 Thai Baht.

KASALONGKHAM CANTEEN

It located at the central undergraduate student dormitory area near SUT gate 4, serving breakfast, lunch and dinner daily. Price per dish is around 25-40 Thai Baht, mostly closed during term break.

OTHER CANTEENS

You may find food to eat around the campus, go explore and get some food!

GATE 1 MARKET

It located in front of Gate 1. It sells many kind of foods and fresh ingredients. You will find 7-11, mini mart, hair salon, goods and others stuffs that you may need at gate 1 market.

GATE 4 MARKET

It located in front of Gate 4. It sells many kind of foods and fresh ingredients. You will find 7-11, mini supermarket such as Big-C and Lotus express, gas station and whole sale store.

SUT products
@ SUT Farm Mart
open daily from 8 a.m. - 7 p.m.



RECOMMENDED!





SUT CAMPUS

TRANSPORTATION

Drive Safe

SHUTTLE BUS

"SUT SMART TRANSIT"

It's free for all students and staff members with 6 routes, Purple line, Blue line, Green line, Yellow line, Orange line and Red line to all campus major areas, please download application to use the service.



SUT BIKE LANE

"BICYCLE"

Bicycle is one of a good option for students, SUT outer ring road has Bike Lane, you can cycling save on campus



ELECTRIC MOTORCYCLE FOR RENT

"MORE SAI"

Mini electric motorcycles "More Sai" are available for rent There are the parking and charging spot with the parking and stop all around campus. starting from 5 Thai Baht + distance of 1 KM/1 Thai Baht. Please download application to use the service.



OTHER SERVICES



Bank



SIAM COMMERCIAL BANK (SCB)

KRUNGTHAI BANK (KTB)

have branches on campus, open from Monday to Friday (8.30 a.m. - 3.30 p.m.) except on public holidays.

Bookshop



CHULA BOOK SHOP

Located at Surapat 1 Building, opposite to Surasammanakhan and near the Seven-Eleven store.
Contact info: <https://www.facebook.com/sutbook>
Tel : +6644-216131-2
Mobile +6686-3061682
Line ID : sutbook

Post Office



THAILAND POST

open from Monday to Friday (8.30 a.m. - 4.30 p.m.) except on public holidays.

Hotel



SURASAMMANAKHAN HOTEL

Hotel room rate at Sura 1 starts from 800+ Thai Baht for SUT guests and 1,100+ Thai Baht for general guests
Sura 2 is serving as international student dormitory with a room rate 4,300 Thai Baht
Tel. +6644-224880

SUT Financial Division

is located on the ground floor, **Administrative Building**
student can pay for tuition and other fees

Open Monday-Friday at 8.30 a.m. - 3.30 p.m.



Medical Services

Suranaree University of Technology Hospital (SUTH)

is located on SUT campus near Gate 2, open daily with 24 hours emergency services. SUT students can access medical services by using a group insurance for all SUT students and personal health insurance, Please present a health insurance card, student ID card and passport
Tel. +664437 6555



SUT SOS

FOR EMERGENCY

- Complaint
- General Repair
- Rapid Repair
- Questionnaire
- Location
- Emergency Call



Add LINE

Tel. +6644-224444



SUT Facilities



Borrowed
20 items
21 day



Reference
Service



Online
Information
Service and
Documentation



Reserve
Book Room



SUT LIBRARY

The Center for Library Resources and Educational Media
Suranaree University of Technology

Library Hours

- **During trimester**
Monday-Friday 08.30 a.m. - 08.00 p.m.
Saturday-Sunday 09.00 a.m. - 05.00 p.m.
Close on University Official Holidays
- **During midterm and final exams**
Monday-Friday 08.30 a.m. - midnight
Saturday, Sunday and University Official Holidays
09.00 a.m. - midnight
- **During trimester break**
Monday-Friday 08.30 a.m. - 04.30 p.m.
Close on Saturday, Sunday and University Official Holidays



Facebook



Line

@SUT-library



Website

SUT SPORTS AND HEALTH CENTER



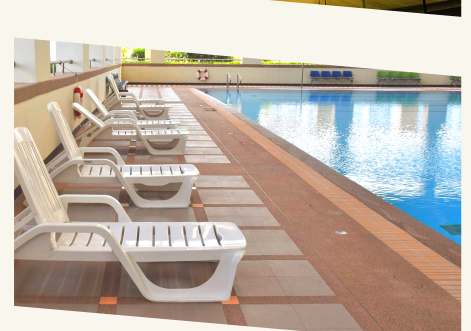
Apply for a membership
<http://sutsport.sut.ac.th/member/home>



Fitness is open from Monday - Friday
10.00 a.m. - 07.30 p.m.
Closed on weekend and public holidays



Swimming pool is required annual fee
and each time enter fee
Open 01.00 p.m. - 07.30 p.m.



+6644-223427



[facebook.com/SUTSportandHealthCentre/](https://www.facebook.com/SUTSportandHealthCentre/)



STUDY COMPLEX 2 (B2)

ACADEMIC BUILDING 2 (C2)



Learning Space

ON SUT CAMPUS



SURAPAT 1 (TECHNOPOLIS)



Foreign Languages Resource Unit (FLRU)

You can practice foreign languages by self at FLRU

- Reading
- Vocabulary
- Grammar
- Using Computer
- Watching Movies
- Listening
- Pronunciation
- Writing
- Testing



Open from Monday - Friday
08.30 a.m. - 04.30 p.m.





SUT
HIGHLIGHT
SPOTS



- ▶ *Tree Tunnel*
- ▶ *Suranapa Tower*

- ▶ *Amphitheater*
- ▶ *SUT Lake*



LOCAL TRANSPORTATION SERVICES

IN NAKHONRATCHASIMA



สายที่ผ่านอนุสาวรีย์ท้าวสุรนารี
Minivan lines passing
Thao Suranaree Monument

- 1
- 1*
- 1*
- 2
- 2*
- 3
- 4
- 4*
- 5
- 5*
- 6
- 6*
- 6*
- 7
- 8
- 8*
- 10
- 11
- 12
- 12*
- 13
- 13*
- 14*
- 14
- 15
- 18
- 19
- 20
- 20*
- 20*



EXPLORE KORAT

Transportation

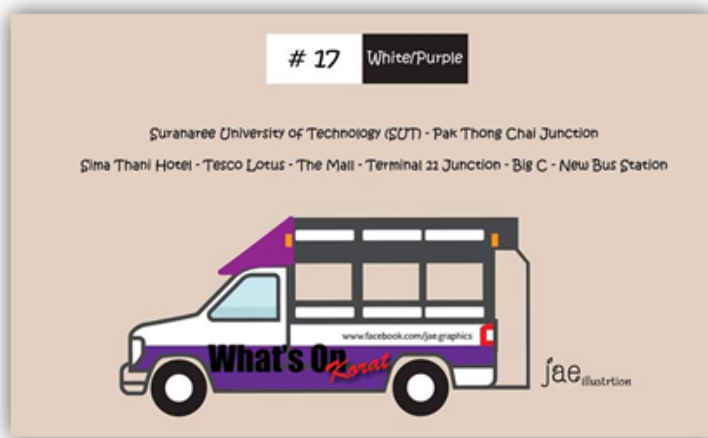


Private Taxi/ Metered Taxi

Metered Taxi. Located at the Korat New Bus Terminal, a metered taxi service is available in the town of Korat.

The call center phone numbers **+6644-990555 / +6682-0180281**

The one-way fare from SUT to Korat city is approx. 300 Thai Baht.



Song Taew route 17

(white with purple and pink stripes)

runs from the Korat New Bus Station to SUT. It passes by The Mall, Tesco Lotus, Terminal 21 and Big C. The fare is 15 Baht. the last bus to downtown leaves SUT at approx. 07.00 p.m.



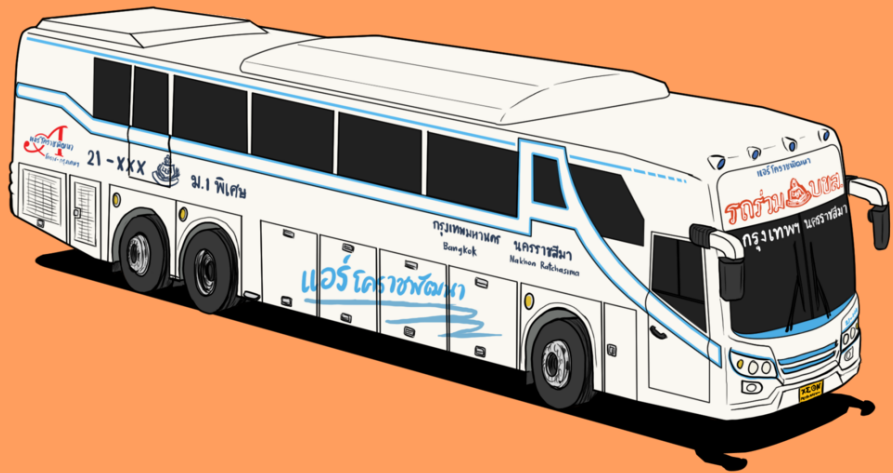
When returning from downtown to SUT, it may be useful to verify with the bus driver that you are boarding the correct bus by showing this word "**มทส.**" or asking "**Moh-Toh-Soh**" the abbreviation of SUT in Thai

Not all taxi drivers speak English, and it may be useful to show the address of the destination written in Thai to the driver.

The SUT's address in Thai:

มหาวิทยาลัยเทคโนโลยีสุรนารี (มทส.) 111 ถนนมหาวิทยาลัย ตำบลสุรนารี
อำเภอเมือง จังหวัดนครราชสีมา เบอร์โทรติดต่อ +6644-224145
(ถนนนครราชสีมา-ปรางค์ชัย เลยกองบินประมาณ 200 เมตร แล้วเลี้ยวขวา
เข้าถนนมหาวิทยาลัยไปอีกประมาณ 5 กม.)

Bangkok <=> Nakhon Ratchasima



Air Korat Pattana

Tel. +6644-230378

Cherdchai Korat

Tel. +6661-023-9292

Nakhonchai 21

Tel. +6644-257-997